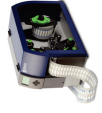
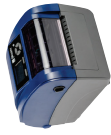


Print solutions

Print & Apply solutions



Printer Specifications	BBP12 Label Printer	BradyPrinter 3300 Industrial Label Printer	BradyPrinter 15100 Industrial Label Printer	BBP72 Double-sided Sleeve Printer
Hours of Operation Recommended Usage per Day	8 hours/5 days 500	8 hours/5 days 3000	8 hours/5 days 5000	24 hours/7 days 7000
Software Compatibility	Brady Workstation, Windows based driver for 3rd party software use, Monocobour	Brady Workstation, Windows based driver for 3rd party software use, Monocobour	Brady Workstation, Windows based driver for 3rd party software use, Monocobour	Brady Workstation, Windows based driver for 3rd party software use, CodeSoft
Colour Capability	Monocobour	Monocobour	Monocobour	Monocobour
Connectivity Options	Serial, USB, Ethernet	USB, Ethernet, Optional: WiFi (factory installed)	USB, Serial, Ethernet, Optional: WiFi, Bluetooth	Serial, USB, Optional: Ethernet
Stand-alone Printing (Detached from PC)	Stand-alone & Peripheral	Peripheral	Stand-alone & Peripheral	Stand-alone & Peripheral
Cutter	Optional	Auto Cutter	Optional	None
Hardware Options	Peel & Present, Universal Keyboard	-	Ribbon Take up Spindle; Label Roll Holder; Platen Rollers	Cutter
Internal Memory Capacity	128 MB (Flash), 64 MB (SDRAM), SD Flash memory card up to 32 GB	512MB RAM, 195 MB IFFS Flash	256MB RAM, 50MB IFFS Flash, SD card, slot up to 512GB	256 MB RAM, 50 MB IFFS Flash, SD card, slot up to 512 GB
Label Dimension Limits	Max. Label Width: 100 mm Min. Label Width: 10 mm Min. Label Height: 10 mm	Max. Label Width: 108 mm Min. Label Width: 6.35 mm Min. Label Height: 6.35 mm	Max. Label Width: 110 mm Min. Label Width: 5 mm Min. Label Height: 5 mm	Max. Label Width: 105.00 mm Min. Label Width: 4.00 mm Max. Label Height: 10.00 mm Min. Label Height: 5.00 mm
Maximum Print Width (mm)	105.60 mm	101.60 mm	105.70 mm	105.60 mm
Print Speed (mm/sec)	101.60 mm/sec	101.60 mm/sec	Up to 300 mm/sec	Up to 300 mm/sec
Print Technology	Thermal Transfer	Thermal Transfer	Thermal Transfer	Thermal Transfer
Print Resolution (dpi)	300	300	300/600	300
Specialty Material Recommendations	Not Recommended	Standard parts in B-593, custom parts in B-7593	Acceptable (with special printer settings)	Not Recommended
Based Panel Labels (B-593, B-7593)	Not Recommended	Applicable	Acceptable (with special printer settings)	Not Recommended
Heatex™ Cable Markers	Not Recommended	Not Recommended	Recommended (single-sided format only)	Recommended (double-sided format only)
PermaSteeves (B-342, B-345)	Not Recommended	Recommended (With 2-pass reinsert of media for double-sided format)	Not applicable	Recommended
PermaSheve Markers (B-7646)	Not Recommended	Not applicable	Acceptable	Recommended
ZH PermaSteeve Markers (B-7641)	Not Recommended	Not applicable	Acceptable (single-sided format only)	Recommended (double-sided format only)
HX PermaSteeve Markers (B-7642)	Not Recommended	Recommended (With 2-pass reinsert of media for double-sided format)	Acceptable (single-sided format only)	Recommended (double-sided format only)
Self-laminating Labels (B-427)	Recommended	Recommended	Recommended	-
Custom labels (only approved B-numbers)	Applicable	Applicable	Applicable	Applicable

Printer Specifications	BradyPrinter 17100 Industrial Label Printer	BradyPrinter A5500 Flag Printer Applicator	WrapPrinter A6500 Wrap Printer Applicator	BradyPrinter A8500 Label Printer Applicator
Hours of Operation Recommended Usage per Day	24 hours/7 days 7000	24 hours/7 days 7000	24 hours/7 days 7000	24 hours/7 days 7000
Software Compatibility	Brady Workstation, Windows based driver for 3rd party software use	Brady Workstation	Brady Workstation	Windows based driver for 3rd party software use
Colour Capability	Monocobour	Monocobour	Monocobour	Monocobour
Connectivity Options	USB, Serial, Ethernet, Optional: WLAN, I/O connection	Ethernet, USB, WiFi	Ethernet, USB, WiFi	Ethernet, I/O connection, Serial, USB, WiFi (optional)
Stand-alone Printing (Detached from PC)	Stand-alone & Peripheral	Stand-alone & Peripheral	Stand-alone & Peripheral	Stand-alone & Peripheral
Cutter	None	-	None	None
Hardware Options	Cutter with Tray, Cutter Perforator, Present Sensor, Peel Off, Rewinder, Platen Rollers	-	-	Applicators
Internal Memory Capacity	256 MB RAM, 50 MB IFFS Flash, SD card, slot up to 512 GB	32 GB - Memory expandable through USB	32 GB - Memory expandable through USB	256MB RAM, 50MB IFFS Flash, SD card, slot up to 512GB
Label Dimension Limits	Max. Label Width: 110 mm Min. Label Width: 4 mm Min. Label Height: 4 mm - 6 mm (for the peel-version)	Max. Label Width: 50.80 mm Min. Label Width: 25.40 mm Max. Label Height: 76.20 mm	Max. Label Width: 50.80 mm Min. Label Width: 12.70 mm Max. Label Height: 76.2 mm Min. Label Height: 19.05 mm	Min. Label Width: 4.00 mm Max. Label Width: 114.00 mm Minimum Label Height: 4.00 mm
Maximum Print Width (mm)	105.70 mm	50.80 mm	50.80 mm	105.60 mm
Print Speed (mm/sec)	Up to 300 mm/sec	76.20 mm/sec	76.20 mm/sec	300 mm/sec
Print Technology	Thermal Transfer	Thermal Transfer	Thermal Transfer	Thermal Transfer
Print Resolution (dpi)	300/600	300	300	300/600
Specialty Material Recommendations	Recommended	Not applicable	Not applicable	Not applicable
Based Panel Labels (B-593, B-7593)	Recommended	Not applicable	Not applicable	Not applicable
Heatex™ Cable Markers	Recommended	Not applicable	Not applicable	Not applicable
PermaSteeves (B-342, B-345)	Recommended (With 2-pass reinsert of media for double-sided format)	Not applicable	Not applicable	Not applicable
PermaSheve Markers (B-7646)	Recommended (With 2-pass reinsert of media for double-sided format)	Not applicable	Not applicable	Not applicable
ZH PermaSteeve Markers (B-7641)	Recommended (With 2-pass reinsert of media for double-sided format)	Not applicable	Not applicable	Not applicable
HX PermaSteeve Markers (B-7642)	Recommended (With 2-pass reinsert of media for double-sided format)	Not applicable	Not applicable	Not applicable
Self-laminating Labels (B-427)	Recommended	Not applicable	Recommended	Not applicable
Custom labels (only approved B-numbers)	Applicable	Applicable	Applicable	Applicable



BBP12
LABEL PRINTER

BradyPrinter 3300
INDUSTRIAL LABEL PRINTER

BradyPrinter 15100
INDUSTRIAL LABEL PRINTER

BBP72
DOUBLE SIDED PRINTER

BradyPrinter 17100
INDUSTRIAL LABEL PRINTER









BradyPrinter A5500
FLAG PRINTER APPLICATOR

WrapPrinter A6500
WRAP PRINTER APPLICATOR

BradyPrinter A8500
PRINTER APPLICATOR

Scan the QR codes for more information:

Benchtop printer comparison guide

BBP12 Label Printer		<p>Description</p> <p>The Brady BBP12 label printer is a compact, reliable, affordable entry-level thermal transfer benchtop printer. Ideal for customers requiring low volume printing on lots of different materials within the electrical, voice and datacom, LAB and specialized electronics markets. It allows you to print labels, tapes, cable markers, sleeves and much more. This printer comes with a free Brady WorkStation Basic Design Software Suite, enabling you to immediately start designing professional labels.</p>
		<p>Applications</p> <p>Asset Identification; Barcode Labeling; Wire & Cable Marking; Laboratory Identification.</p>
BradyPrinter i3300 Industrial Label Printer		<p>Description</p> <p>The BradyPrinter i3300 Industrial Label Printer is a completely hassle free, easy to use PC-based printer that can print signs and labels up to 4" wide. Smart chip supplies automatically set up the label in your Brady software, eliminating manual calibration and label waste. Drop-in ribbon and label cartridges ensure fast and effortless material changes. The i3300 Industrial Label Printer can print on a full range of safety and facility label materials as well as die cut labels for wire identification, product identification or laboratory identification. This printer comes with a free Brady WorkStation Basic Design Software Suite, enabling you to immediately start designing professional signs and labels.</p>
		<p>Applications</p> <p>General & Industrial Identification; Circuit Board & Component Identification; Wire & Cable Marking; Laboratory Identification; Asset Identification; Workplace Safety & Compliance; Lean; 5S & Visual Workplace; Facility, Maintenance & Operations ID; Buildings & Grounds; Logistics/Warehousing</p>
BradyPrinter i5100 Industrial Label Printer		<p>Description</p> <p>The BradyPrinter i5100 Industrial Label Printer offers a perfect mix of performance & smart. This benchtop printer can print on 70 label materials, more than 1200 stock label parts and labored custom label materials and parts. Applications include a wide range of specialised and commonly used product labels, electronics and PCB labels, logistics and asset tracking labels, cable & component identification labels and laboratory sample labels.</p>
		<p>Applications</p> <p>General & Industrial Identification; Circuit Board & Component Identification; Wire & Cable Marking; Laboratory Identification; Asset Identification.</p>
BBP72 Double-sided Sleeve Printer		<p>Description</p> <p>Higher volume printer designed specifically for printing double-sided sleeves in larger quantity print job sizes.</p>
		<p>Applications</p> <p>High Volume Perma sleeve™ Wire Marking Sleeves Printing (double-sided format only).</p>
BradyPrinter i7100 Industrial Label Printer		<p>Description</p> <p>The BradyPrinter i7100 Industrial thermal transfer benchtop printer is ideal for customers requiring reliable high volume printing on lots of different materials within the Aerospace, Defence and Mass Transit, Electronics, Automotive, Logistics, Electrical, Voice-Datacom and LAB markets. It guarantees accurate printing on sleeves, tags, labels, tapes, cable markers and much more. This printer comes with a free Brady WorkStation Basic Design Software Suite, enabling you to immediately start designing professional labels.</p>
		<p>Applications</p> <p>General & Industrial Identification; Circuit Board & Component Identification; Wire & Cable Marking; Laboratory Identification.</p>
BradyPrinter A6500 Flag Printer Applicator		<p>Description</p> <p>The BradyPrinter A6500 Flag Printer Applicator helps increase production output and enhance identification quality by automatically printing and applying flag labels. It can save quite a bit of money by identifying cables in 5 seconds and by eliminating the need to print labels in advance and the time needed to apply them by hand. The BradyPrinter A6500 enables 300 dpi prints for barcodes, logos and diagrams, and applies reliable cable flags that can communicate a lot of information.</p>
		<p>Applications</p> <p>Cable & wire identification.</p>
Wraptor A6500 Wire ID Printer Applicator		<p>Description</p> <p>Wraptor™ A6500 Wire ID Printer Applicator Automate your wire identification process. The Wraptor A6500 Wire Identification Printer Applicator can significantly increase production output by identifying cables with wrap-around labels in 5 seconds. The Wraptor automatically prints and applies the label on a wide range of insertable cables, saving up to 10 seconds per identified cable.</p>
		<p>Applications</p> <p>Cable & Wire Identification.</p>
BradyPrinter A8500 Label Printer Applicator		<p>Description</p> <p>Fully automate PCB identification with an industry 4.0 device that prints and applies tiny, reliable labels accurately and consistently.</p>
		<p>Applications</p> <p>PCB Identification</p>